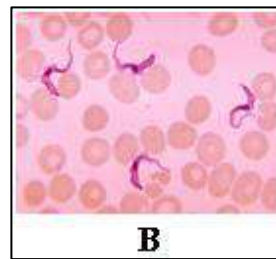


**Model Question 2020**  
**ZOOLOGY – HONOURS - PRACTICAL**  
**Seventh Paper (ONLINE)**

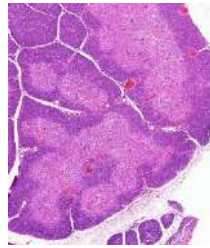
**Full Marks: 100**

**Time – 2 hour**

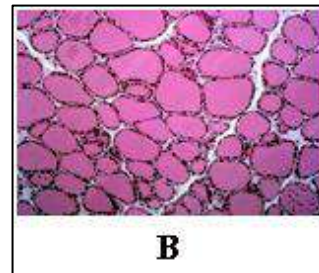
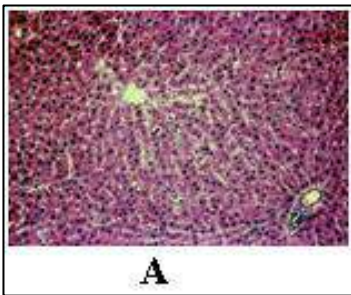
1. Write only the procedure of quantitative estimation of DNA from a given sample by diphenylamine method. 20
2. Discuss how would you dissect a cockroach, smear the gut content on glass slide, stain and mount the smear. Draw and label a suitable diagram of any one protozoan specimen and identify the same. 10+10=20
3. Identify the following two parasites with scientific name, four distinguishing characters and two clinical importance of each specimen. 7+7=14



4. Identify the specimen with four identifying characters. 6



5. Identify two specimens with four identifying characters of each specimen. 10+10= 20



6. Write the adaptive characters with its significance and nature of adaptation of the following of the samples provided. 10+10



**A**

**B**